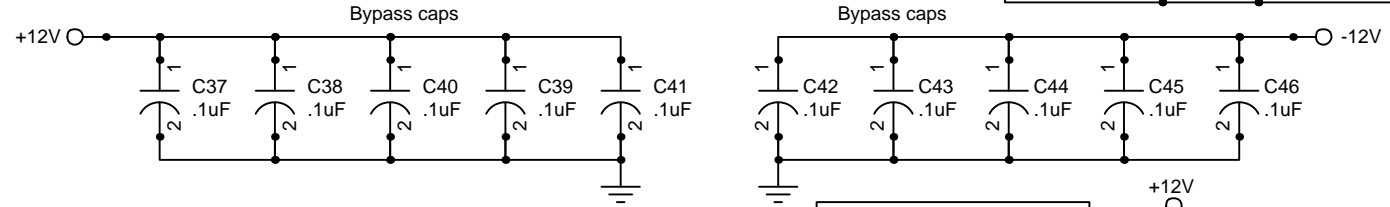
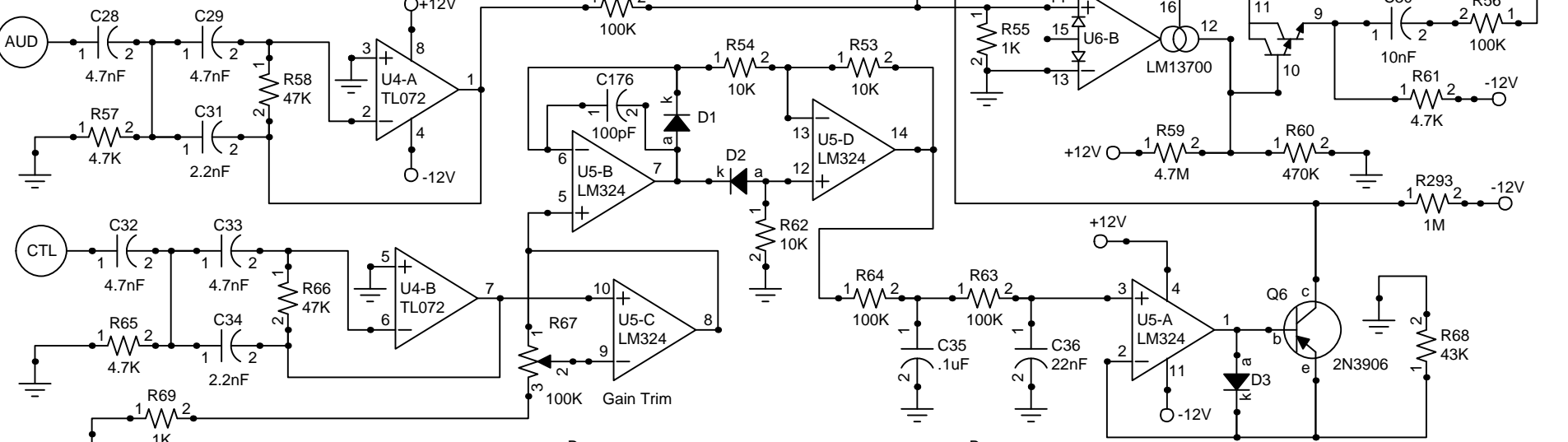


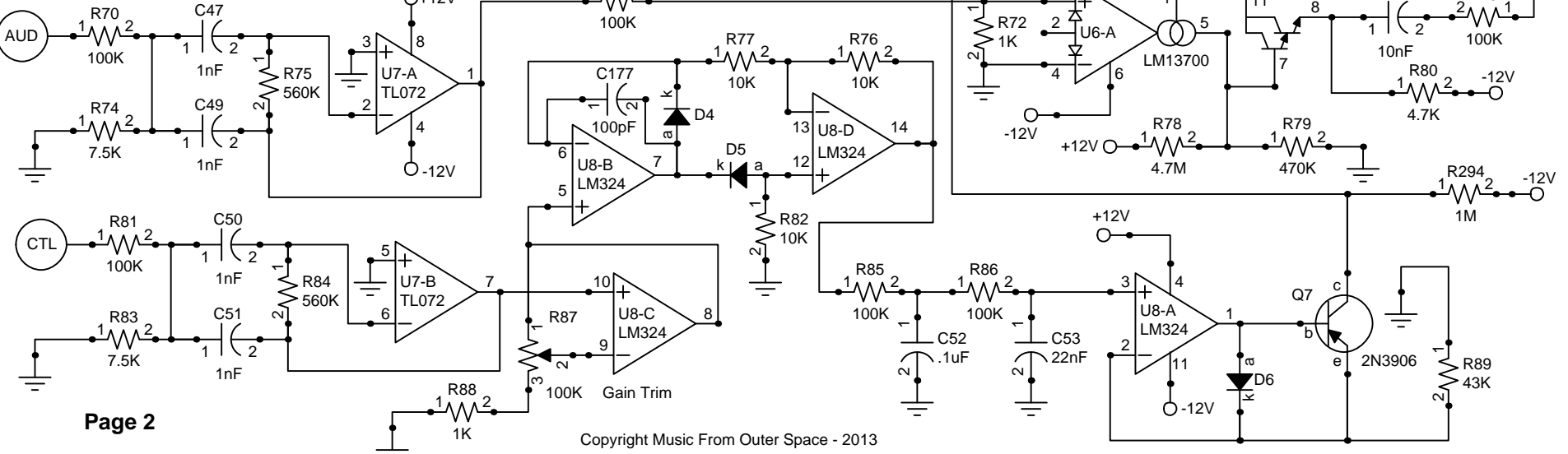
MFOS 12 Channel Vocoder

Designed and Drawn by Ray Wilson

3330 Hz High-Pass, $G = -2.13$, $Q = .88$



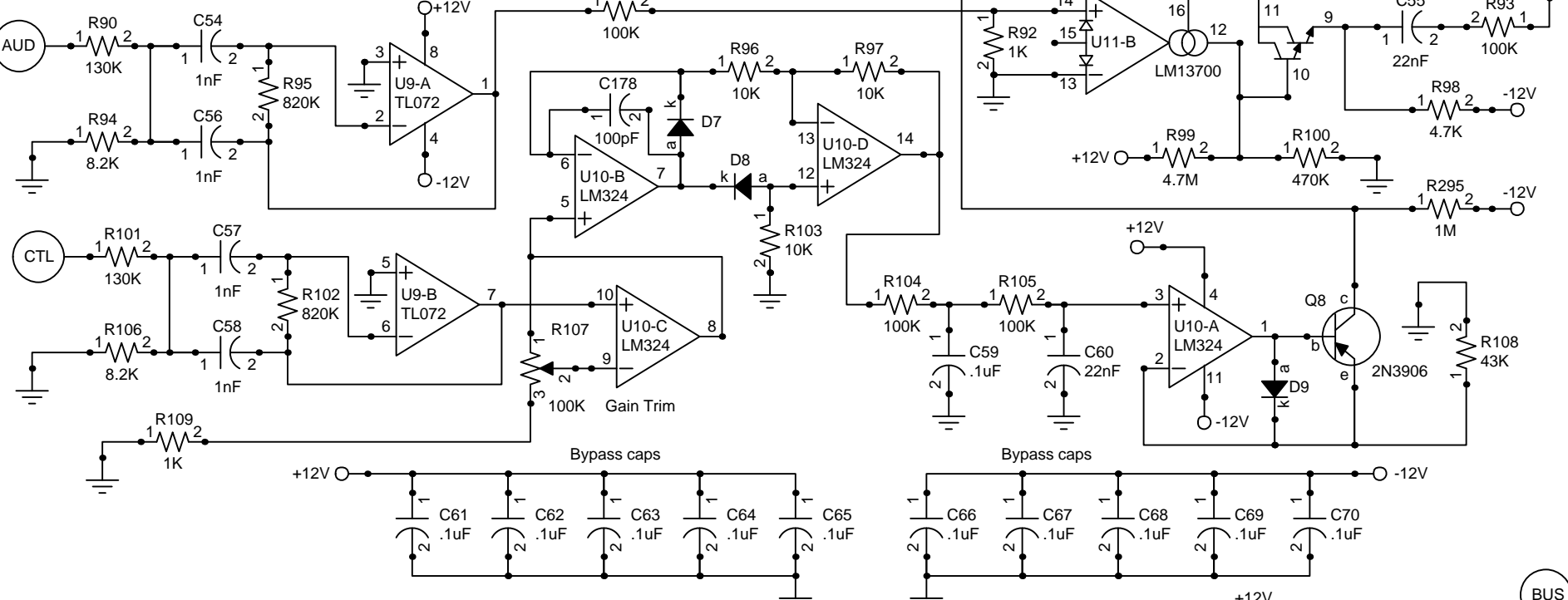
2546 Hz Band-Pass, $G = -2.8$, $Q = 4.48$



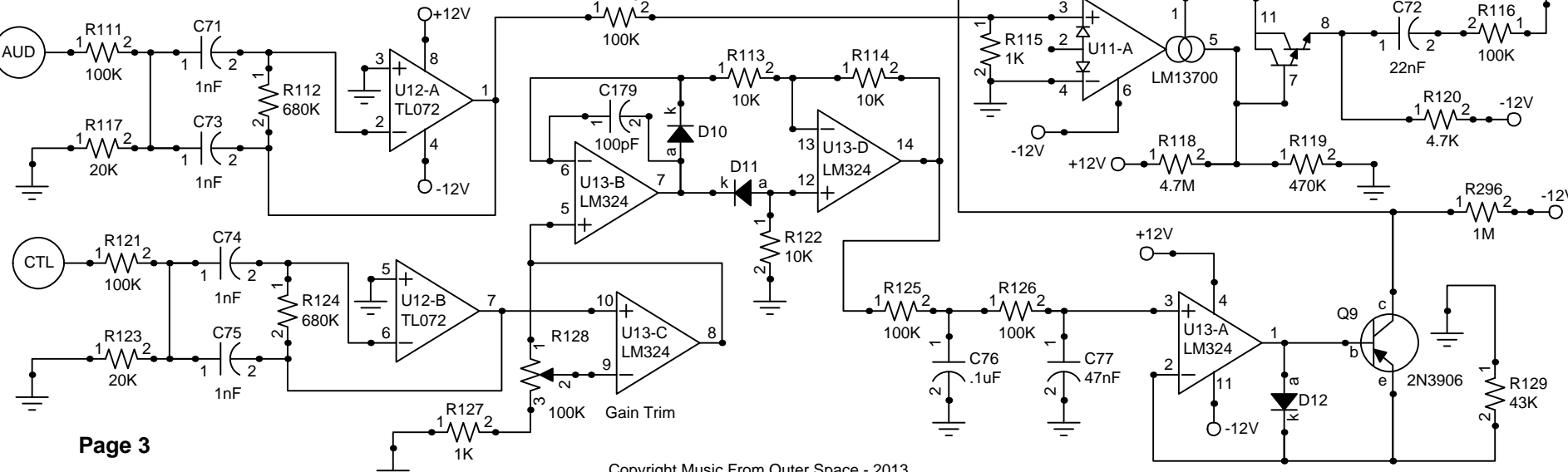
MFOS 12 Channel Vocoder

Designed and Drawn by Ray Wilson

2001 Hz Band-Pass, $G = -3.15$, $Q = 5.16$



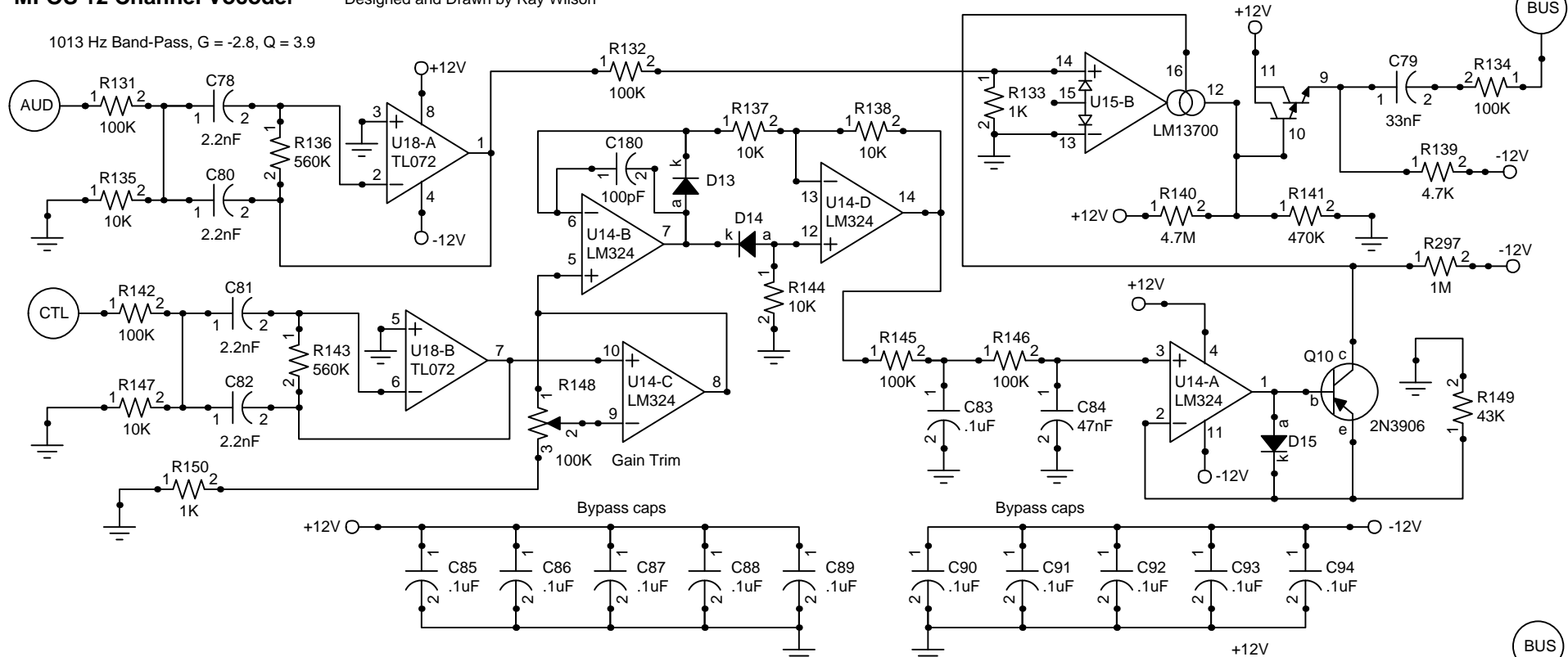
1495 Hz Band-Pass, $G = -3.4$, $Q = 3.2$



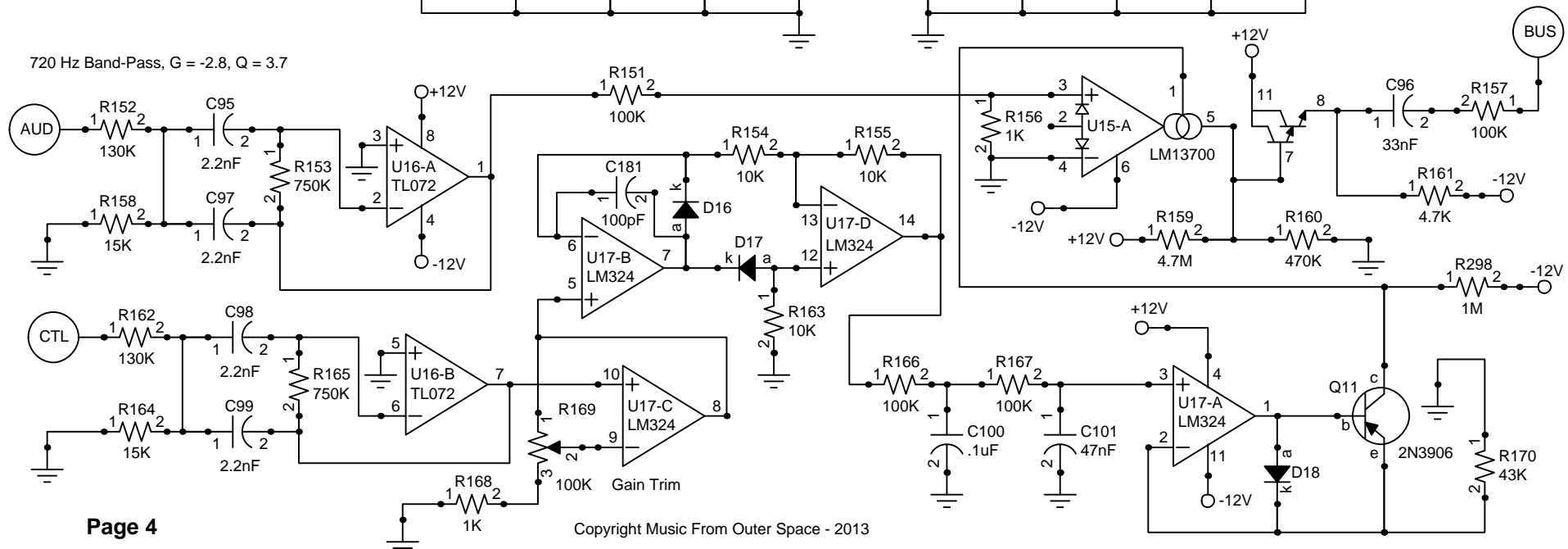
MFOS 12 Channel Vocoder

Designed and Drawn by Ray Wilson

1013 Hz Band-Pass, $G = -2.8$, $Q = 3.9$



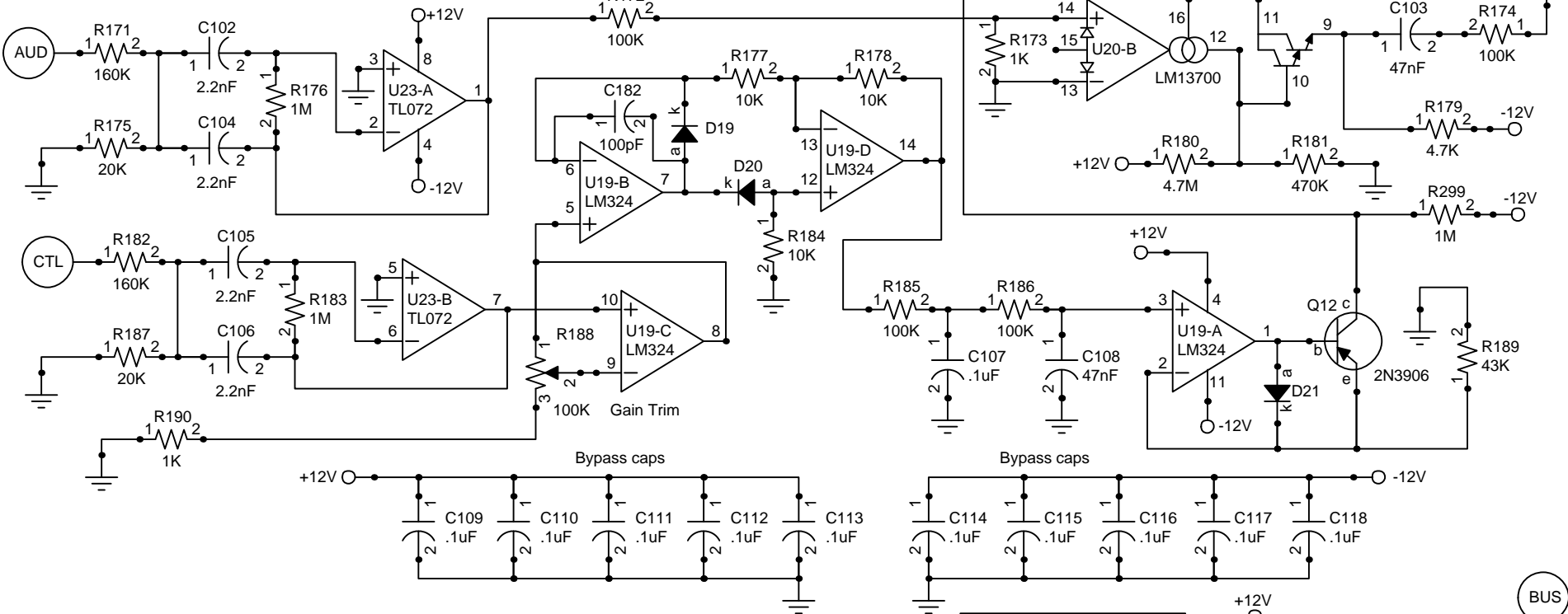
720 Hz Band-Pass, $G = -2.8$, $Q = 3.7$



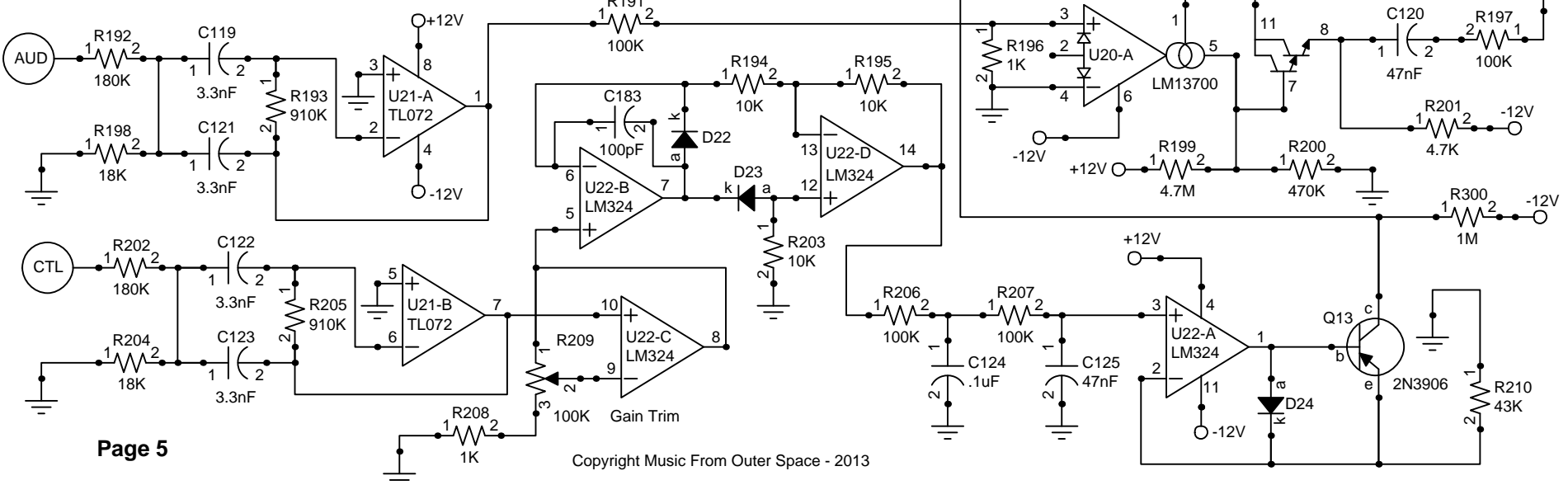
MFOS 12 Channel Vocoder

Designed and Drawn by Ray Wilson

542 Hz Band-Pass, $G = -3.12$, $Q = 3.75$

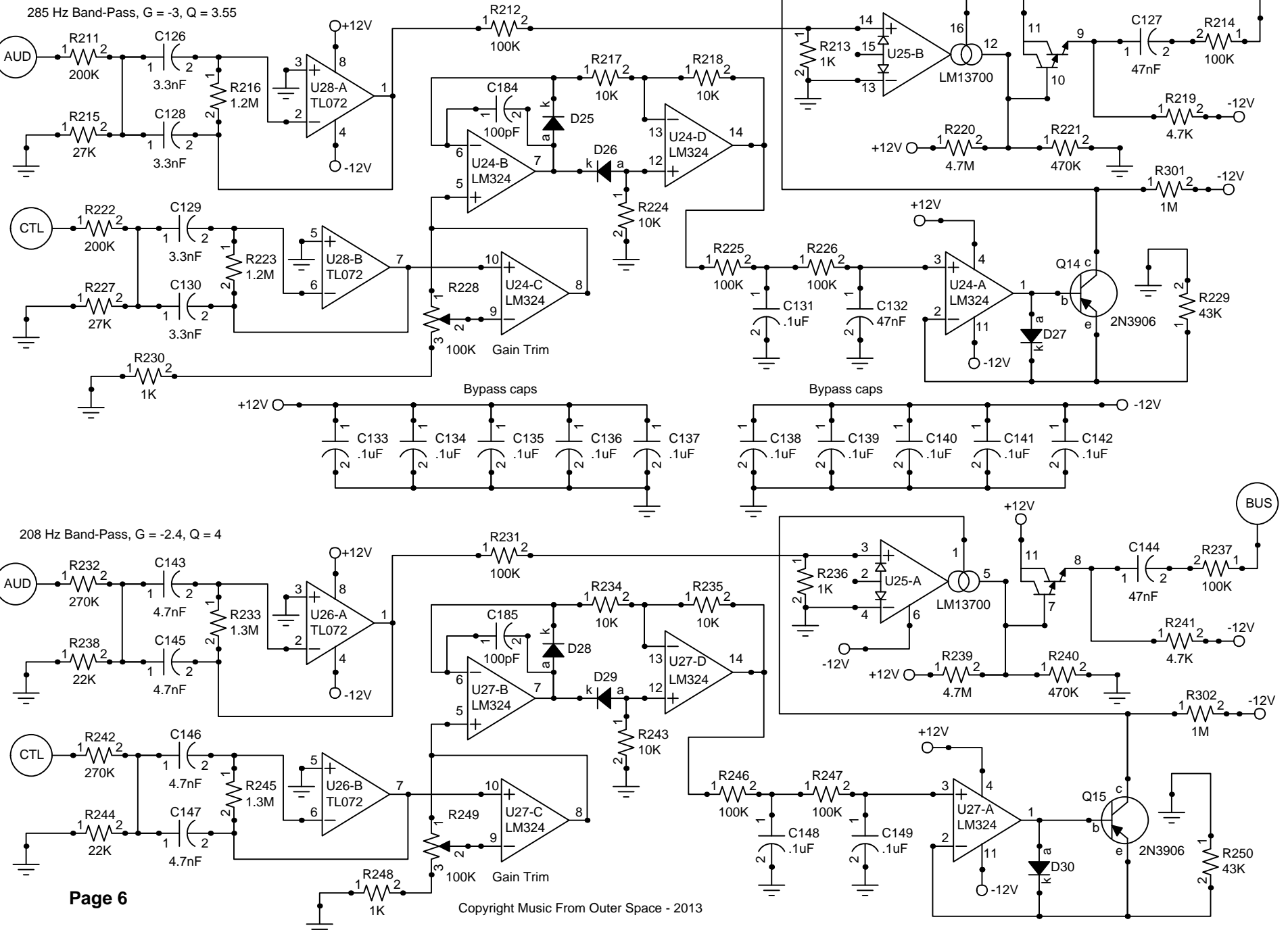


395 Hz Band-Pass, $G = -2.5$, $Q = 3.7$



MFOS 12 Channel Vocoder

Designed and Drawn by Ray Wilson



MFOS 12 Channel Vocoder

Designed and Drawn by Ray Wilson

